



TEACHER'S COPY

THE BUMBLEBEE'S BODY

Using your labeled bee sheet, match the correct descriptions to the correct body part.

ANTENNAE

Moveable feelers that detect smells and movement.

POLLEN BASKETS

A collection of hairs where pollen is collected and transported.

SIMPLE EYES

Have a thick lens, which can sense changes in brightness.

COMPOUND EYES

Made up of small lenses that allow the bee to see visible and ultraviolet light.

WINGS

Beat 250 times every second and allow the bee to fly.

STINGER

Used for defense, it is barbed and has a venom pouch.

LEGS

Used for walking, brushing off pollen, storing pollen and dusting antennae.

HEAD

The front part of the Bee which has two compound eyes, 3 simple eyes and 2 antennae.

Word Bank:

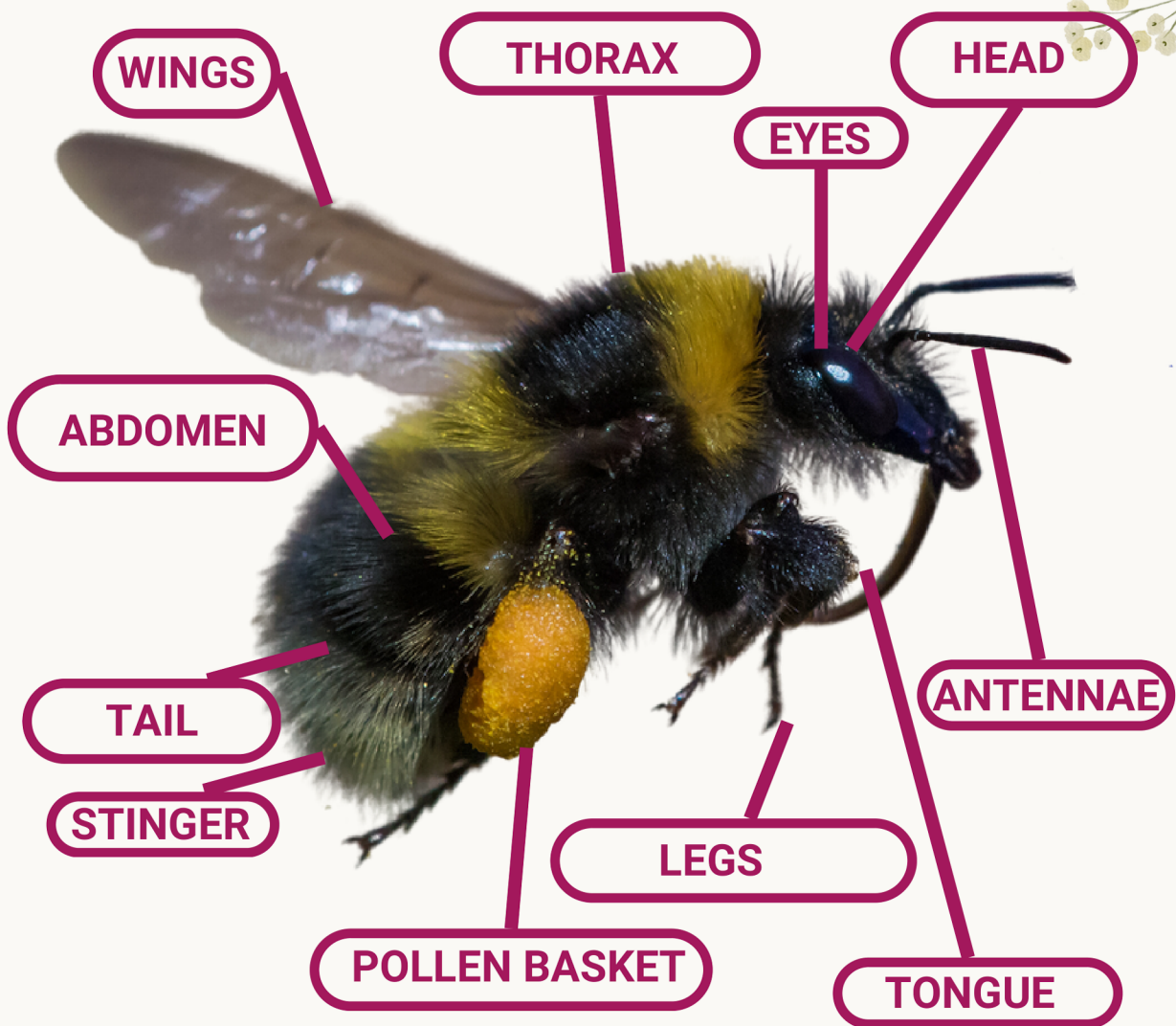
Wings, Legs, Head, Simple Eyes, Compound Eyes, Antennae, Pollen Baskets, Stinger

Can you describe how climate change can pose a danger to bumblebees?

If temperatures keep rising, bumblebees will have to move further north to keep within their desired climate, otherwise they won't survive the warmer weather. Adaption can take hundred of years, and climate change is happening much faster.

TEACHER'S COPY

CAN YOU LABEL THE CORRECT PARTS OF THE BUMBLEBEE?



Word Bank:

Thorax, Antennae, Abdomen, Tongue, Pollen Basket, Tail, Stinger, Legs, Head, Eyes, Wings



Can you describe one way that the bumblebee has adapted to live in colder climates?

They generate a lot of heat through flapping their wings to keep them warm. They became furrer to keep their bodies warm. They became rounder and larger bodies reduced the surface area they could loose heat from.