



THE BUMBLEBEE'S BODY

Using your labeled bee sheet, match the correct descriptions to the correct body part.

Moveable feelers that detect smells and movement.

A collection of hairs where pollen is collected and transported.

Have a thick lens, which can sense changes in brightness.

Made up of small lenses that allow the bee to see visible and ultraviolet light.

Beat 250 times every second and allow the bee to fly.

Used for defense, it is barbed and has a venom pouch.

Used for walking, brushing off pollen, storing pollen and dusting antennae.

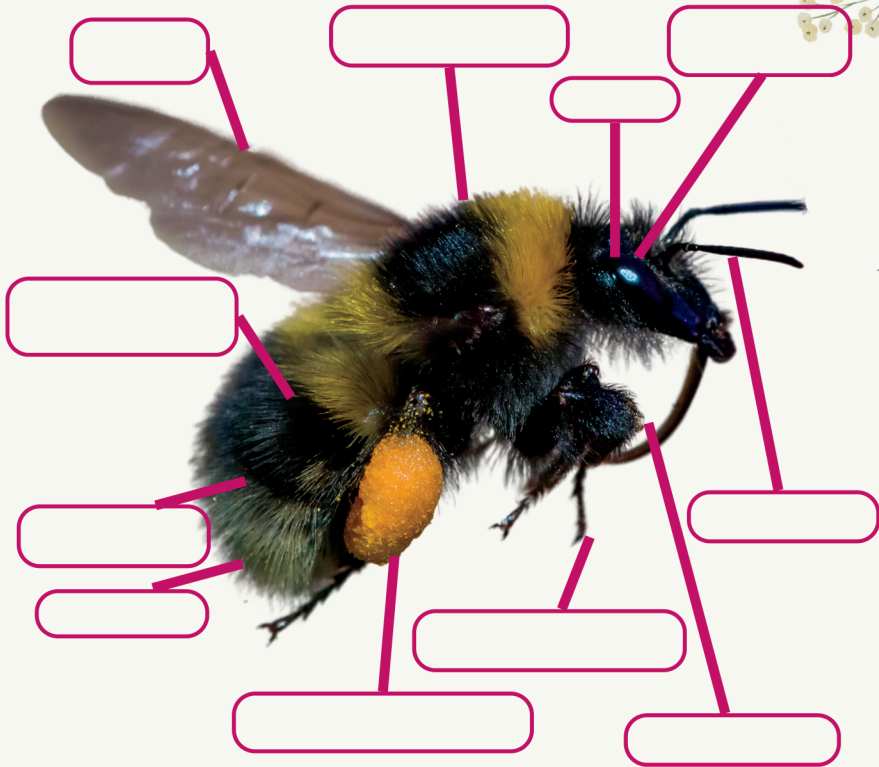
The front part of the Bee which has two compound eyes, 3 simple eyes and 2 antennae.

Word Bank:

Wings, Legs, Head, Simple Eyes, Compound Eyes, Antennae, Pollen Baskets, Stinger

Can you describe how climate change can pose a danger to bumblebees?

CAN YOU LABEL THE CORRECT PARTS OF THE BUMBLEBEE?



Word Bank:

Thorax, Antennae, Abdomen, Tongue, Pollen Basket, Tail, Stinger, Legs, Head, Eyes, Wings



Can you describe one way that the bumblebee has adapted to live in colder climates?
